



# Pro-Mist® Dura

A quiet, high performance electric ULV sprayer, the Pro-Mist Dura has been redesigned from the ground up... focusing on flexibility and durability.

## MAKE IT YOURS

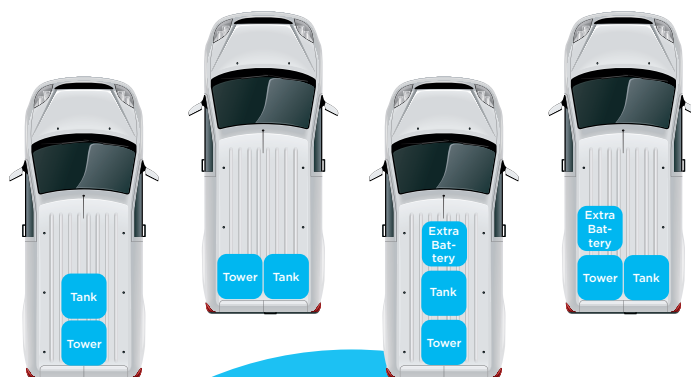
With a new modular system, the Pro-Mist Dura can be easily configured to your own personal preferences. Flexibility is made simple by connector shafts that let you mix and match separate pads housing the spray head, formulation tank/s and battery.

- Connector shafts let you easily join together or take apart pads (adjust mount points in 3/4 inch or 1.9 cm increments). Configure in a single row running the length of the truck, horizontal across the back or in an L-shape – the choice is yours.
- Blower stand base can be separated from the tank base and can be reconfigured to change overall footprint.
- Bases can be configured to include an expansion battery base, dual 5 gallon tank or an additional 15 gallon tank base.
- At only 140lbs the Pro-Mist Dura's modular design makes for easy moving and storage.

## CONVENIENCE ALL AROUND

- Power switch is on the front of the tower making it easy to reach from the back of a truck or ATV
- All ports are quick connect, including the battery
  - Change a battery in less than 30 seconds!
- Quick connect formulation lines too
- New flush/store position for spray line
- Spray head adjust to vertical position for compact storage

## CONFIGURATION OPTIONS



## SPRAY HEAD REDESIGNED

- The new spray head is longer and wider because a protective “well” surrounds the motor shaft preventing any possible backflow or overspray seepage.
- New, patent pending design is engineered to accommodate two new viton seals.
- Motor shaft vibration is reduced by extending the shaft to the back of the motor housing. This end of the shaft is now secured by an additional high speed bearing.

## SPRAY SLEEVE IS NEW TOO

- The new *disposable* sleeve is larger and made of blended high strength materials to avoid distortion at high rpms.
- New sleeve design significantly extends sleeve life. Sleeves have been known to run 100 hrs + depending on formula used and rate.

## DURABILITY

- New spray head shock dampener helps reduce both vertical and horizontal jostling of the spray head
- Tower panels are made of high density polyethylene, same as that used for freighter ship dock guards
  - Chemical and corrosion resistant
  - Outwears hardened steel
- New, toughened up tower mounts

## STANDARD FEATURES

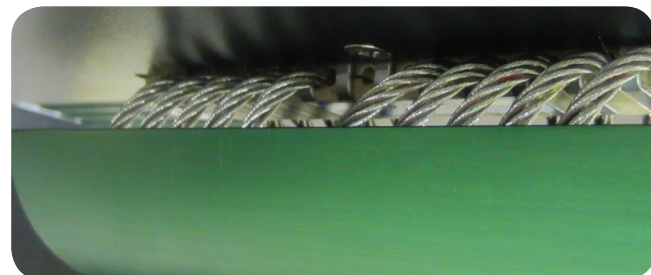
- Suitable for most ULV spray applications up to 20 mph
- Advanced rotary spray head technology to maximize efficiency
- Laser droplet performance analysis 92% or more, size distributions of 6-30 microns
- Quiet operation and lessens carbon footprint
- Modular design- easy to configure
- Simple flow rate calibration
- Fingertip remote cab control
- Stainless steel aluminum and Ultra High Molecular Weight Polyethylene with stainless hardware for lasting value and durability
- Heavy duty 24 volt brushless DC spray head operation
- Built in circuit diagnostic features
- Expandable software capabilities
- SmartFlow II flow control
- Rear spotlight, mounted on swivel, and ring light surrounds guard to illuminate spray cloud
- Positive displacement pumping system comes standard with adjustable flow
- SmartFlow II operating system features a **Maintenance Alert Timer**. Based on customizable count down times, this timer notifies the operator when the disposable sleeve needs to be changed.



Illuminated spray head



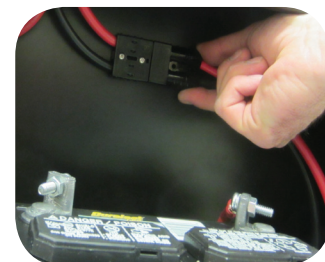
Redesigned spray head on left



New shock dampener system protects spray head



Removing the new spray sleeve is easy



All connections are now quick-connect

## OPTIONAL FEATURES

- Long lasting, durable disposable dispensing sleeve
- Modular base design to be reconfigured in multiple ways
- Battery expansion base
- Dual 5 gallon formulation tanks and base
- Variable flow with GPS sensing

## SPECIFICATIONS

|                     |  |
|---------------------|--|
| Weight              | 140 lbs. (46kg) (+ battery weight)       |
| Dimensions          | 40"Lx28"Wx29.5"H<br>(107cmLx71cmWx94cmH) |
| Noise Level         | 80 db or less at nozzle                  |
| Pumping System      | FMI carbon/ceramic                       |
| Power Requirements  | 12 volt operation                        |
| Flow Control System | SmartFlow II                             |
| Formulation Tank    | 15 gal. (56.7 liter)                     |

## GLOBAL HEADQUARTERS

675 Sidwell Court St. Charles, IL 60174

Phone: (800) 323.5727 or (630) 894.2000 Fax: (630) 630.443.3070

[www.clarke.com](http://www.clarke.com)

© 2015 Clarke. Pro-Mist is a registered U.S. trademark of Clarke.