

[CLICK HERE TO JUMP TO USE DIRECTIONS](#)



# BARRIER<sup>®</sup>

## ORNAMENTAL LANDSCAPING HERBICIDE

*A selective herbicide for control of annual and perennial grasses and weeds in noncrop areas: Landscape ornamentals not grown for commercial sale, parks, along roads & highways, around buildings, hedges, trees, sports grounds, along fences.*

**ACTIVE INGREDIENT:**  
Dichlobenil: 2,6-dichlorobenzonitrile..... 4.0%  
**INERT INGREDIENTS:** ..... 96.0%  
TOTAL 100.0%

**KEEP OUT OF REACH OF CHILDREN  
CAUTION**



**READ THE ENTIRE LABEL FIRST.  
OBSERVE ALL PRECAUTIONS AND  
FOLLOW DIRECTIONS CAREFULLY.**

### PRECAUTIONARY STATEMENTS

#### Hazards to Humans & Domestic Animals

**CAUTION:** Harmful if swallowed or absorbed through skin or inhaled. Avoid contact with eyes, skin or clothing. Avoid breathing dust.

#### Personal Protective Equipment (PPE):

Some materials that are chemical-resistant to this product are made of any waterproof material. If you want more options, follow the instructions for category A on an EPA chemical-resistant category selection chart.

Applicators and handlers must wear:

- Long sleeved shirt and long pants
- Socks and shoes
- Chemical-resistant gloves

Follow manufacturer's instructions for cleaning/maintaining PPE. If no such instructions for washables, use detergent and hot water. Keep and wash PPE separately from other laundry.

#### User Safety Recommendations:

*Users should:*

- Wash hands before eating, drinking, chewing gum, using tobacco or using the toilet.
- Remove clothing immediately if pesticide gets inside. Then wash thoroughly and put on clean clothing.
- Remove PPE immediately after handling this product. Wash the outside of gloves before removing. As soon as possible, wash thoroughly and change into clean clothing.

#### FIRST AID

<b>If in eyes:</b>	<ul style="list-style-type: none"> <li>• Hold eye open and rinse slowly and gently with water for 15-20 minutes.</li> <li>• Remove contact lenses, if present, after the first 5 minutes, then continue rinsing eye.</li> <li>• Call a poison control center or doctor for treatment advice.</li> </ul>
<b>If swallowed:</b>	<ul style="list-style-type: none"> <li>• Call a poison control center or doctor immediately for treatment advice.</li> <li>• Have person sip a glass of water if able to swallow.</li> <li>• Do not induce vomiting unless told to do so by the poison control center or doctor.</li> <li>• Do not give anything by mouth to an unconscious person.</li> </ul>
<b>If on skin or clothing:</b>	<ul style="list-style-type: none"> <li>• Take off contaminated clothing.</li> <li>• Rinse skin immediately with plenty of water for 15-20 minutes.</li> <li>• Call a poison control center or doctor for treatment advice.</li> </ul>
<b>If inhaled:</b>	<ul style="list-style-type: none"> <li>• Move person to fresh air.</li> <li>• If person is not breathing, call 911 or an ambulance, then give artificial respiration, preferably mouth-to-mouth if possible.</li> <li>• Call a poison control center or doctor for further treatment advice.</li> </ul>

Have the product container or label with you when calling a poison control center or doctor or going for treatment. You may also contact 1-877-800-5556 for emergency medical treatment advice.

#### ENVIRONMENTAL HAZARDS:

Cover, collect, or incorporate granules spilled on the soil surface. For terrestrial uses, do not apply directly to water, or to areas where surface water is present or to intertidal areas below the mean high water mark. Do not contaminate water when disposing of equipment washwater.

#### GROUNDWATER ADVISORY:

This chemical has properties and characteristics associated with chemicals detected in groundwater. The use of this chemical in areas where soils are permeable, particularly where the water table is shallow may result in groundwater contamination.

### DIRECTIONS FOR USE

It is a violation of Federal law to use this product in a manner inconsistent with its labeling.

Do not apply this product in a way that will contact workers or other persons, either directly or through drift. Only protected handlers may be in the area during application.

For any requirements specific to your State or Tribe, consult the agency responsible for pesticide regulation.

Not for use on plants being grown for sale or other commercial use, or for commercial seed production, or for research purposes. For use on plants intended for aesthetic purposes or climatic modification and being grown in ornamental gardens or parks, or on golf courses or lawns and grounds.

Keep unprotected persons out of treated areas until sprays have dried.

BARRIER<sup>®</sup> Ornamental Landscaping Herbicide is recommended for use in all established landscape plantings in institutional, ornamental, and residential sites. BARRIER<sup>®</sup> Ornamental Landscaping Herbicide is intended to be applied by lawn care operators, service technicians, maintenance applicators, and other landscape personnel.

Institutional sites are defined as areas around properties or facilities providing a service to public or private organizations including, but not limited to, hospitals, nursing homes, schools, museums, libraries, sport facilities, golf courses, and office buildings. Ornamental sites include established plantings around residences, parks, streets, retail outlets, cemeteries, industrial and institutional buildings. Finally, residential sites are defined as areas associated with the household or home life including, but not limited to apartment complexes, condominiums, and patient care areas of nursing homes, mental institutions, hospitals, or convalescent homes.

BARRIER® Ornamental Landscaping Herbicide can be used for residual weed control in these noncropland areas:

- Around trees, shrubs, hedges, woody ornamentals, nonbearing fruit trees (ornamental), and certain groundcovers established in shelter-belts, windbreaks, and landscape plantings.
- Under fencelines, along fences, driveways, parking areas, parking lots, and borders of flower beds.
- Along roads and highways and under guard rails.
- Along golf cart pathways, sidewalks, and cemetery memorials.
- Around residences, buildings, and other outbuildings.

**LANDSCAPE PLANTINGS:**

BARRIER® Ornamental Landscaping Herbicide is recommended for use around the established landscape ornamentals listed below:

BARRIER® Ornamental Landscaping Herbicide is not recommended for flower gardens, wildflowers, foliage plants, or flowering bulbs.

- |  |                         |
|--|-------------------------|
| Amur corktree                          | Honeysuckle             |
| Arborvitae                             | Juniper                 |
| Ash                                    | Kinnikinnick            |
| Azalea <sup>1</sup>                    | Laurel                  |
| Barberry                               | Leucothoe               |
| Beauty bush                            | Lilac                   |
| Birch                                  | Linden                  |
| Boxelder                               | Locust                  |
| Boxwood                                | Magnolia                |
| Camellia                               | Maple*                  |
| Caragana                               | Mock orange             |
| Cleyera ( <i>Cleyera japonica</i> )    | Mountain ash            |
| Cotoneaster                            | Nandina                 |
| Cottonwood                             | Oak                     |
| Crabapple (Ornamental)                 | Osmanthus (Holly-olive) |
| Deutzia                                | Paxistima               |
| Dogwood                                | Pecan (Ornamental)      |
| Eastern red cedar                      | Photinia                |
| Elm                                    | Pine*                   |
| Elwood false cypress*                  | Pittosporum             |
| English ivy ( <i>Hedera helix</i> )    | Podocarpus              |
| English walnut (Ornamental)            | Poplar                  |
| Euonymus                               | Privet                  |
| Filbert (Ornamental)                   | Pyracantha              |
| Flowering almond                       | Rhododendron            |
| Flowering quince                       | Rockrose                |
| Forsythia                              | Rose                    |
| Gardenia                               | Russian olive           |
| Goldenrain tree                        | Spirea                  |
| Hackberry                              | Squawcarpet             |
| Heather                                | Willow*                 |
| Holly ( <i>Ilex</i> spp.) <sup>2</sup> | Weigela                 |
| Honeylocust                            | Yew ( <i>Taxus</i> )    |

<sup>1</sup>Kurume, Mollis, Hardy hybrid types and hardy native species only.

<sup>2</sup>Except *I. crenata*, *I. rotunda*, *I. vomitoria*

\*Not for use on these species within the State of California. Pine species are sensitive to injury from BARRIER® Ornamental Landscaping Herbicide if applied within two years after transplanting.

**SOIL SURFACE TREATMENT:**

Spring and fall applications are effective. Apply as soil surface treatment from late fall through early spring. For best results, applications in the states of Maine, Vermont, New Hampshire, Massachusetts, Rhode Island, Connecticut, New York, Michigan, Wisconsin, Minnesota, North Dakota, South Dakota and Montana should be made in early spring after soil has thawed. Do not apply to frozen soil or over the top of the snow. Old weed growth should not be removed before application. Do not make surface applications to areas which have been cultivated during the fall or summer prior to application.

**SOIL TREATMENT WITH INCORPORATION:**

If practical, shallow incorporation may increase the effectiveness of weed control. Apply and incorporate immediately after application in late fall or very early spring.

**ANNUAL AND BIENNIAL WEED CONTROL:**

This product is recommended for control of annual grass and broadleaf weeds such as: Annual Bluegrass (*Poa annua*), Bull Thistle, Camphorweed, Carpetweed, Chickweed, Citronmelon, Coffeeweed, Crabgrass, Cudweed, Evening Primrose, Fiddleneck, Florida Purslane (Pusley), Foxtail, Groundsel, Henbit, Jerusalem Oak Goosefoot, Knotweed, Lambsquarters, Maypops, Climbing Milkweed, Miner's Lettuce, Old Witchgrass, Pepperweed, Pineappleweed, Purslane, Ragweed, Deadnettle, Redroot Pigweed, Rosarypea, Russian Thistle, Shepherds-purse, Smartweed, Spanishneedles, Spurge, Teaweed, Texas Panicum, Wild Barley, Wild Carrot, Wild Mustard, and Wild Radish.

**PERENNIAL WEED CONTROL:**

This product is recommended for control of certain perennial weeds such as Artemisia, Bluegrass, Canada Thistle, Curly Dock, Dandelion, Dogfennel, False Dandelion (Catsear), Fescue, Horsetail, Leafy Spurge, Natalgrass, Orchardgrass, Plantain, Quackgrass, Russian Knapweed, Timothy, Wild Artichoke, Wild Aster, Yellow Rocket, and Yellow Woodsorrel.

Apply in early spring before seeds of annual weeds germinate or after cultivation has removed the growing weeds. Distribute granules uniformly over the soil surface. If treatment is followed by application of ½ to 1 inch of water by overhead irrigation, the lower rates are recommended. Shallow incorporation immediately after application is recommended in southern states. In other areas, shallow incorporation or sprinkler irrigation is suggested when applications are made during periods of high temperatures.

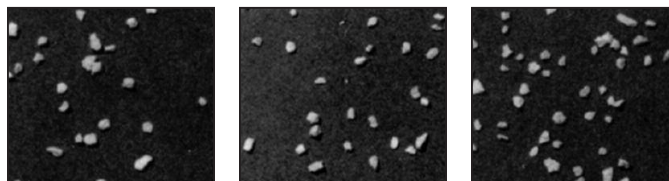
**APPLICATION RATES:**

For annual and biennial weeds apply 100 to 150 pounds of product per acre. For perennial weeds listed, apply 150 to 200 pounds of product per acre. Do not apply more than 150 pounds of product per acre on Azalea, Boxwood, Euonymus, Forsythia, Heather, Holly, Ivy, Lilac, Leucothoe. Do not apply until 4 weeks after transplanting. Do not apply more than 150 pounds of product per acre on plantings less than one year old.

Weeds	Amount of Product		Approximate Treated Area for this Bag Size	
	Pounds/Acre	Pounds/1,000 Sq. Ft.	Bag Size	Sq. Ft.
Annual and Biennial Weeds	100 - 150	2.3 - 3.4	50# bag size	22,000 - 14,000
Perennial Weeds	150 - 200	3.4 - 4.6	50# bag size	14,000 - 11,000

**EQUIPMENT CALIBRATION:**

Determine the size of the treatment area, select the appropriate application rate, and calibrate the granular spreader. These three diagrams show the distribution pattern of the granules and will help with your equipment calibration.



100 Pounds of Product/Acre    150 Pounds of Product/Acre    200 Pounds of Product/Acre

**USE PRECAUTIONS:**

- Do not use in seedbeds, transplant or cutting beds, commercial nurseries or greenhouses. Do not apply until 6 months after planting rooted cuttings.
- Do not apply to areas on slopes above lawns or susceptible crops as runoff from treated area could cause injury.
- Do not exceed the maximum recommended amount per growing season. Do not use on "St. Lucie fine sand", "Arzell fine sand" or other light sandy soil.
- Do not graze livestock in treated areas.
- Avoid applications which allow BARRIER® Ornamental Landscaping Herbicide to lodge in the foliage, particularly in conifer species, such as pines, yews, etc.

- Do not allow BARRIER® Ornamental Landscaping Herbicide to accumulate and be in contact with trunk at or below soil line.
- Do not apply this product by backpack applicator.

**UNDER ASPHALT:**

For general weed control under asphalt (in areas such as roadways, parking lots, recreational areas), after final grade is achieved, apply 250 pounds of product per acre (5¾ pounds of product per 1,000 square feet). Treated area should be covered with asphalt as soon as possible. For resurfacing work, existing weeds should be sprayed with a contact herbicide prior to application.

This chemical has properties and characteristics associated with chemicals detected in groundwater. The use of this chemical in areas where soils are permeable, particularly where the water table is shallow may result in groundwater contamination.

**STORAGE & DISPOSAL**

Do not contaminate water, food, or feed by storage and disposal.

**PESTICIDE STORAGE:** Store in original bag in a locked storage area inaccessible to children or pets. Storage area should be cool and dry. Keep bag tightly closed. Reseal bag by rolling down top to product level and taping or clipping. Do not store near seeds, bulbs, or in greenhouses.

**PESTICIDE DISPOSAL:** Wastes resulting from the use of this product may be disposed of on site or at an approved waste disposal facility.

**CONTAINER DISPOSAL:** Nonrefillable container: Do not reuse or refill this container. Completely empty bag into application equipment. Then offer for recycling if available or dispose of empty bag in a sanitary landfill, or by incineration or, if allowed by state and local authorities, by burning. If burned, stay out of smoke.

**LIMITED WARRANTY AND DISCLAIMER**

The manufacturer warrants only that the chemical composition of this product conforms to the ingredient statement given on the label, and that the product is reasonably suited for the labeled use when applied according to the Directions for Use.

**TO THE EXTENT CONSISTENT WITH APPLICABLE LAW, THE MANUFACTURER NEITHER MAKES NOR INTENDS ANY OTHER EXPRESS OR IMPLIED WARRANTIES, INCLUDING ANY WARRANTY OF MERCHANTABILITY OR FITNESS FOR A PARTICULAR PURPOSE, WHICH ARE EXPRESSLY DISCLAIMED.** This limited warranty does not extend to the use of the product inconsistent with label instructions, warnings or cautions, or to use of the product under abnormal conditions such as drought, excessive rainfall, tornadoes, hurricanes, etc. These factors are beyond the control of the manufacturer or the seller. Any damages arising from a breach of the manufacturer's warranty shall be limited to direct damages, and shall not include indirect or consequential damages such as loss of profits or values, except as otherwise provided by law.

The terms of this Limited Warranty and Disclaimer cannot be varied by any written or verbal statements or agreements. No employee or agent of the seller is authorized to vary or exceed the terms of this Limited Warranty and Disclaimer in any manner.

BARRIER® is a registered trademark of PBI/Gordon Corporation.

512/10-2011 AP112409  
EPA REG. NO. 2217-675



**MANUFACTURED BY**  
PBI/GORDON CORPORATION  
1217 WEST 12TH STREET  
KANSAS CITY, MISSOURI 64101  
www.pbigordon.com