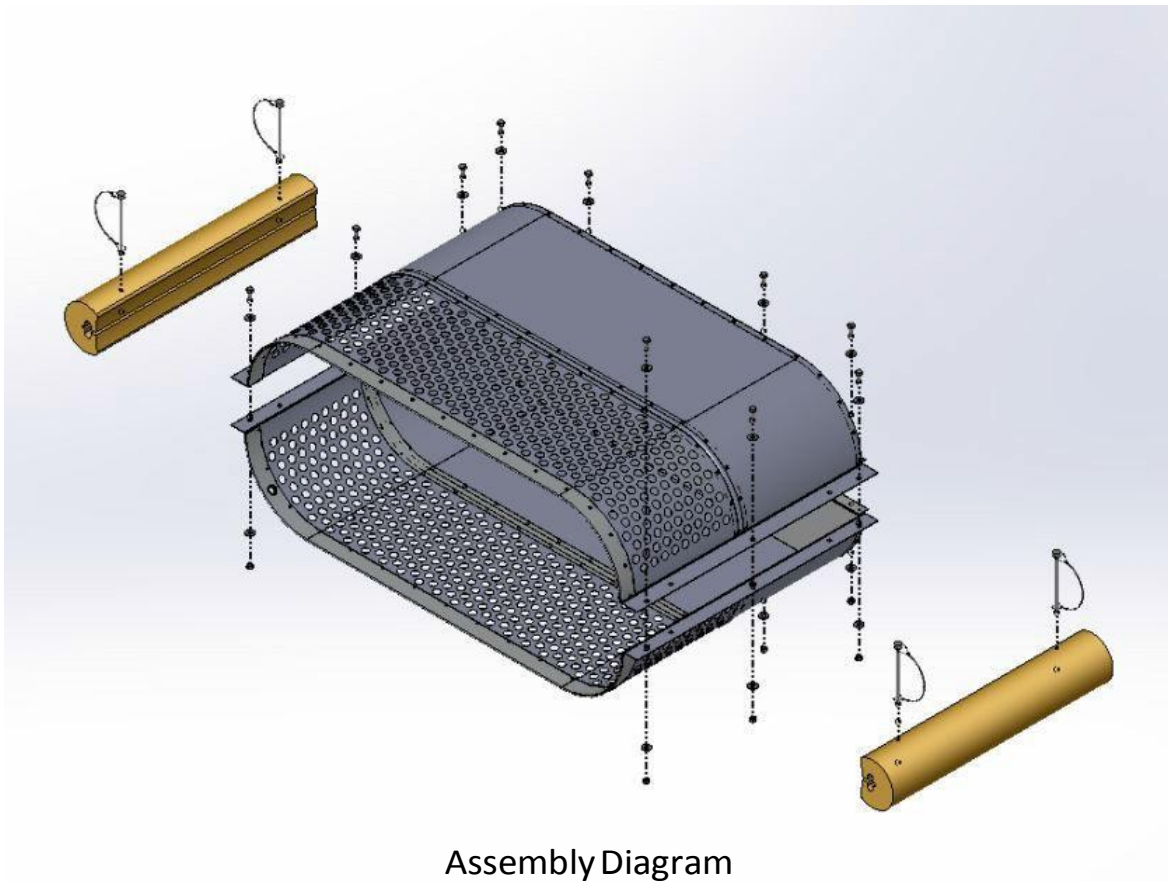


Swifter Sifter


Operator's Manual



Assembly Diagram

SAFETY FIRST

Instructions containing a warning within this manual are marked with a symbol.

 These concern critical points which must be taken into consideration to prevent serious bodily injury, for this reason you are requested to read all such instruction carefully and follow them without fail.

WARNINGS IN THE MANUAL

WARNING

This mark indicates instruction which must be followed in order to prevent accidents which could lead to serious bodily injury or death.

NOTE

This mark indicates hints or directions helpful in the use of the product.

Do not use the Swifter Sifter in areas where there are underwater electrical cables or devices.



Do not use any type of motorized or mechanical device to retrieve or launch the Swifter Sifter.



Parts List

Perforated basket halves	2
Floats	2
Pin with buckle (secure float to basket)	4
45 foot floating rope (white)	2
25 foot rope (yellow)	1
Bolts $\frac{1}{4}$ " x $\frac{3}{4}$ "	10
Nylock nuts	10
Washers	20

Assembly Instructions

The Swifter Sifter is shipped in two pieces (see Assembly Diagram).

1. Take one half and set it onto the edges of the other half to form basket.

Each side of the basket is secured with 3 bolts, the back edge of the basket is secured with 4 bolts. Each $\frac{1}{4}$ " x $\frac{3}{4}$ " bolt is secured with a nylock nut. Place each bolt through its respective hole and hand tighten.

Do not tighten with a wrench until all bolts are installed.

2. The floats can be attached to the sides of the basket using two lock pins. Each float has a hole drilled through the foam where the lock pin is inserted. Slide the pin into the hole of the float then through the hole in the side flange of the basket then continue through the hole in the float until the end of the pin stick out of the opposite side of the float.

3. Pull the "buckle" of the lock pin over the end of the protruding pin to lock it in place (see Assembly Diagram).

Reverse this procedure to remove the floats.

Retrieval Ropes

The white ropes are attached to the basket through the grommets at the outer edge of the basket mouth.

1. Feed one end of the rope through the grommet hole.
2. Tie an overhand knot in the rope leaving about 6" of tail on the rope.
3. Pull tight to make sure knot does not come loose



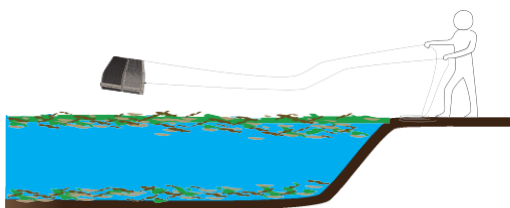
Rescue Rope

The yellow rescue rope is attached through the hole at the center of the back of the Swifter Sifter where the two halves of the basket come together.

1. The rescue rope should be fastened using a buntline hitch knot.
2. Feed one end of the rope through the larger hole on the back edge. Bring the free end up and cross over, then under the standing line.
3. Bring the free end to the front of the knot and you will now finish by tying a half hitch around the standing line.
4. Pull the knot tight.

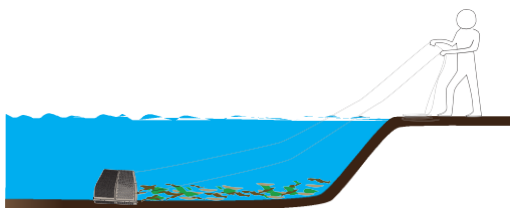


Using the Swifter Sifter underwater



The **Rescue** rope should be properly attached to the basket any time the Swifter Sifter is being used underwater.

The Swifter Sifter can be used to remove decaying organic matter, leaves, sticks, weeds, roots, algae, stones, seed pods and other debris from the bottom of your lake, pond or shoreline.



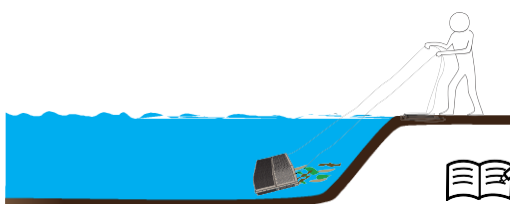
1. Remove the floats from the Swifter Sifter. Make sure the **Retrieval** ropes are securely attached to the grommets.

2. Toss the Swifter Sifter or place it where you want to begin your retrieval. The **side** of the basket with the **Retrieval** ropes should be **closest to the bottom**.

3. Let the basket sink for a few seconds or longer depending on the depth of water.

4. The Swifter Sifter should be retrieved with a right, left, right, left rope pulling action.

5. Pull one rope, no more than a foot, then the other rope, no more than a foot. Repeat this action until the Swifter Sifter is back to you.



This method of retrieval reduces the chances the basket will dig into the bottom. It also helps to direct the debris you are trying to remove into the mouth of the Swifter Sifter.

Swifter Sifter is stuck on the bottom

If during the retrieval process, it becomes very difficult or impossible to pull either Retrieval rope, **stop the retrieval process.**

The Swifter Sifter may be caught on something on the bottom or is full of debris.

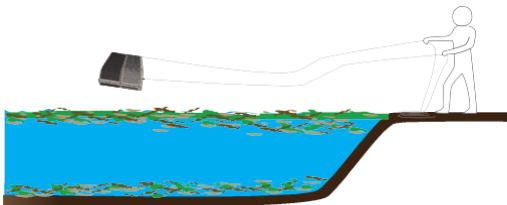
If it is stuck and you can't move it or you can pull the ropes but they become very difficult to pull, **do not try to pull the rope with anything other than your hands (do not attach the rope to a motorized power source)**, grab the **Rescue** rope and pull in the opposite direction of the retrieval.

We recommend you pull the Rescue rope a minimum of 5 feet in the opposite direction.

If possible, resume the retrieval at a 90 degree angle from the original path until you feel you have maneuvered past whatever the Swifter Sifter may have been caught on.

Using the Swifter Sifter on the water surface

The Swifter Sifter can be used to remove floating unattached aquatic plants (eg. Hydrilla, duck weed, water meal), floating leaves, filamentous algae and other floating debris.



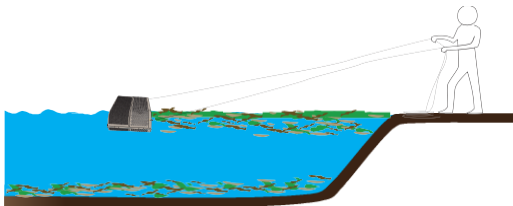
Removing floating filamentous algae from the water surface prior to the application of an algaecide can reduce the amount of chemical treatment required and increase the efficacy of the treatment.

1. The Swifter Sifter can be thrown or placed at the location where the retrieval will begin. In this application, the basket should be deployed with the **Retrieval** rope on the top side.

2. Pull the **Retrieval** ropes toward you together.

DO NOT use the left, right retrieval process used for underwater retrieval.

3. Depending on what you are skimming off the surface, a rapid retrieval may be more effective than a slow retrieval.



For example, filamentous algae is very light and has very little density. It tends to fill the surface water space within the basket quickly. In this case, a rapid retrieval will help to compress some of the algae allowing more to fit into the basket with each retrieval.

At Jenlis, we provide solutions to the problems that plague people's lives. Check out our other lake and pond products at www.weedrazers.com and our other cool products at www.hoprs.com, www.feedsavr.com and www.bettermilk.com.